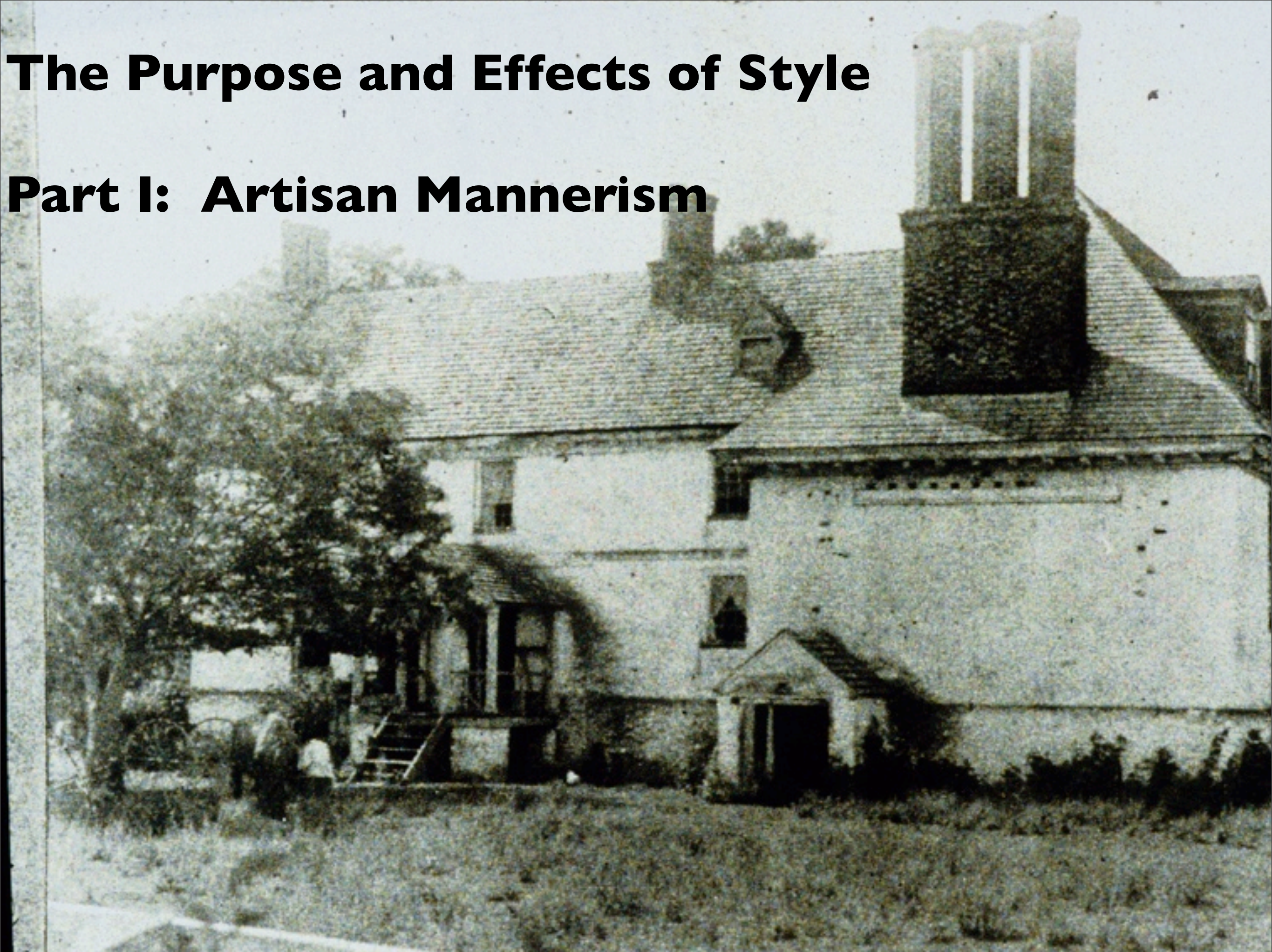
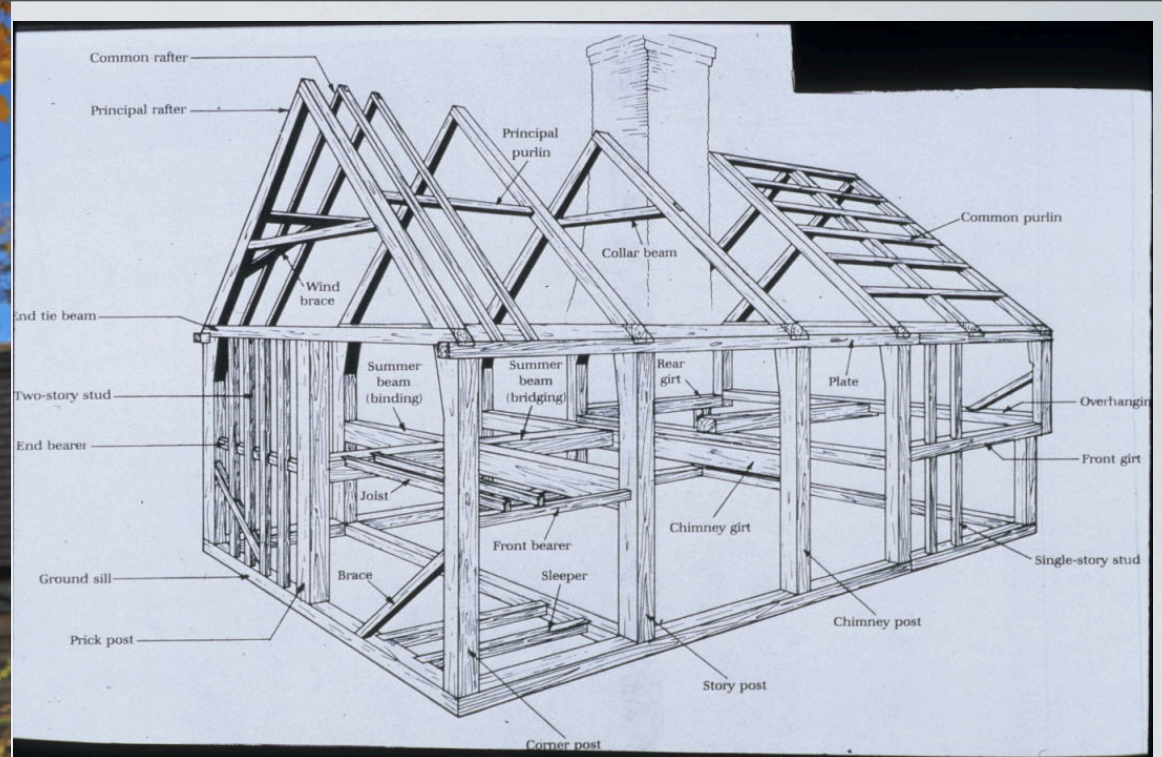


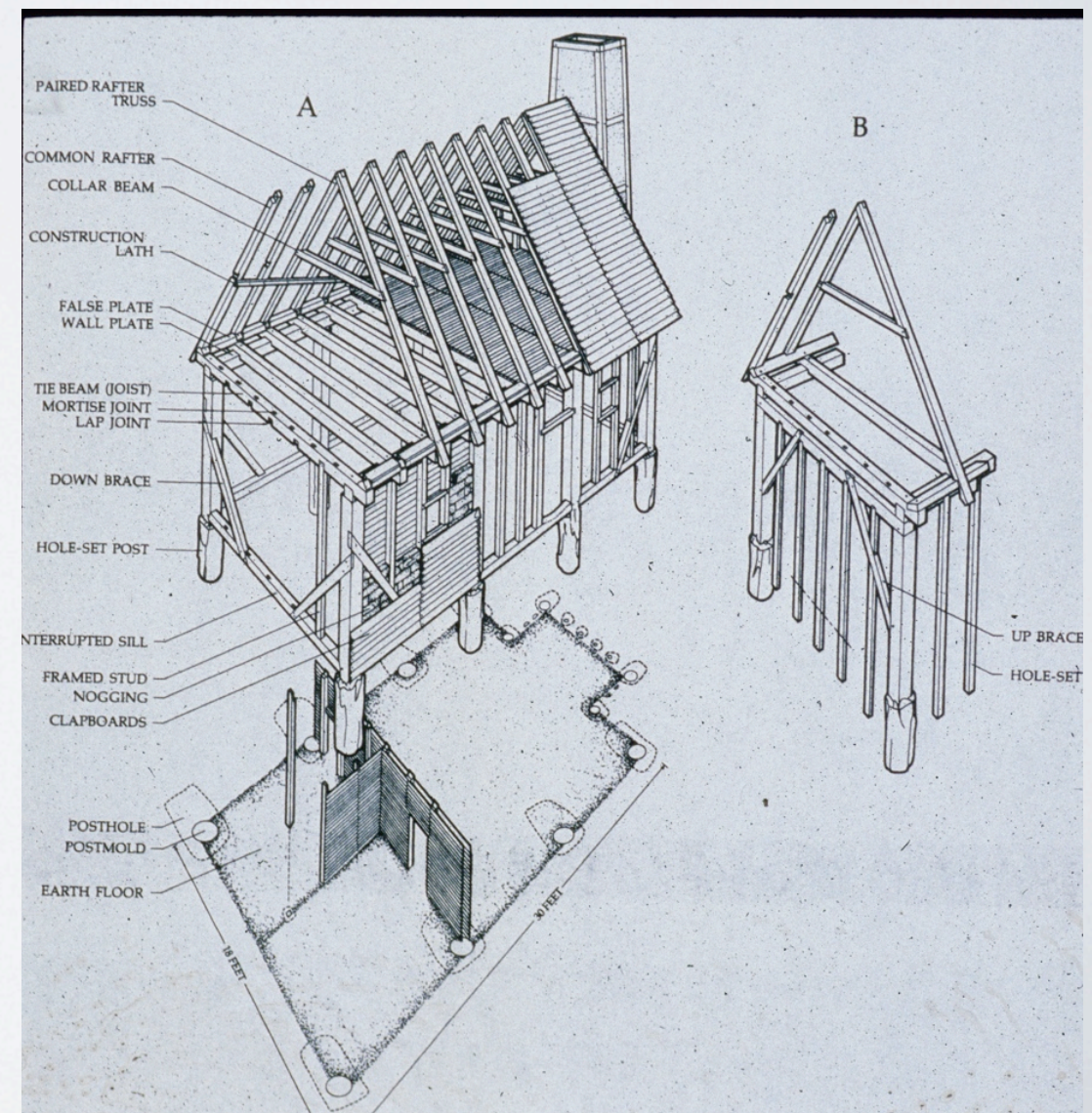
The Purpose and Effects of Style

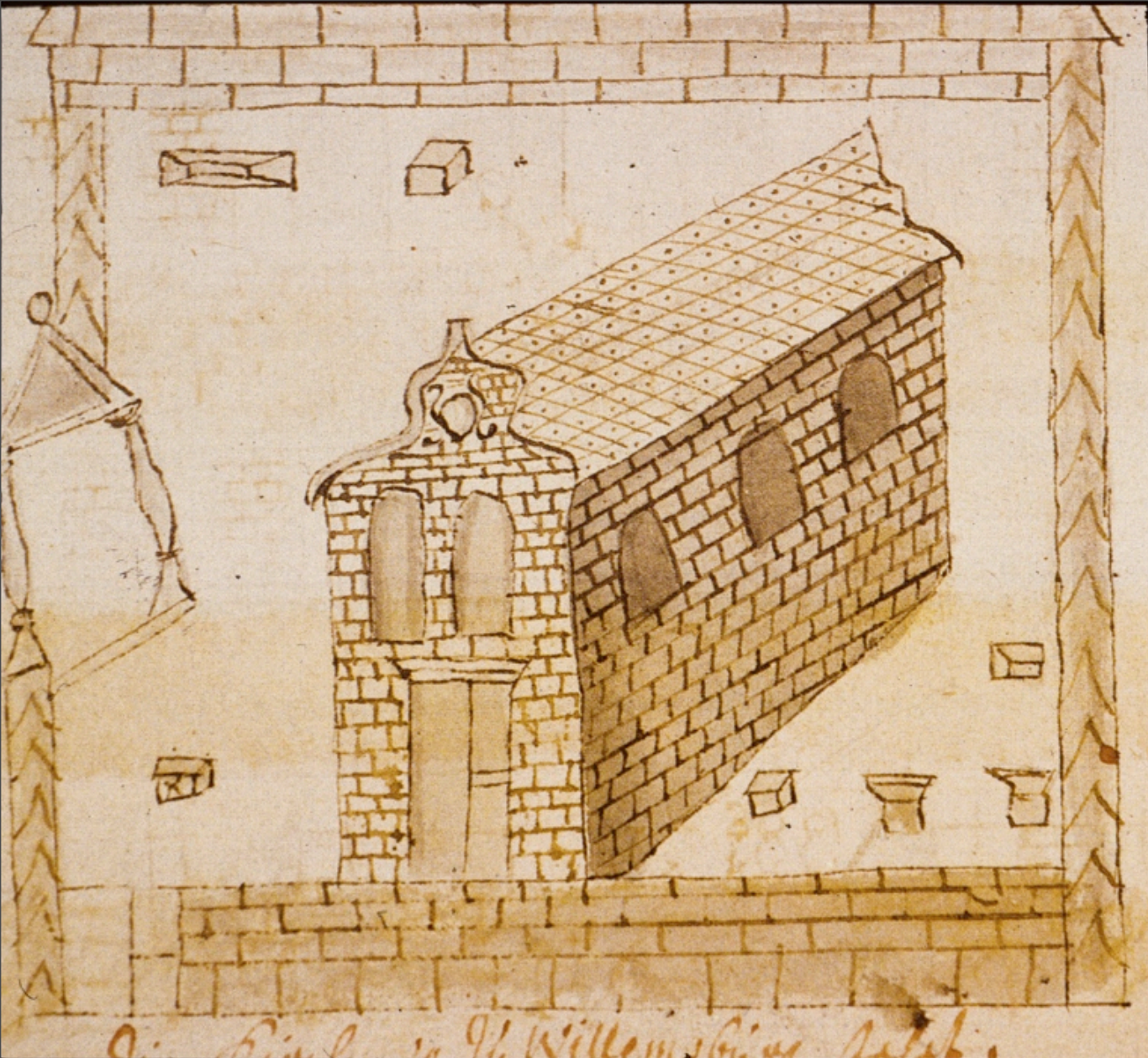
Part I: Artisan Mannerism





English Vernacular Traditions





**Above:
Bruton Parish Church, 1680,
Williamsburg, VA**

**Above and Right:
St. Luke's, 1682, Isle of Wight, VA**

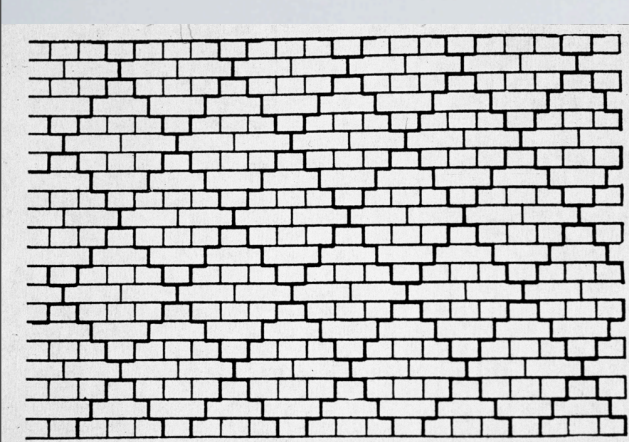


Bacon's Castle, 1655, Surrey Co., Va





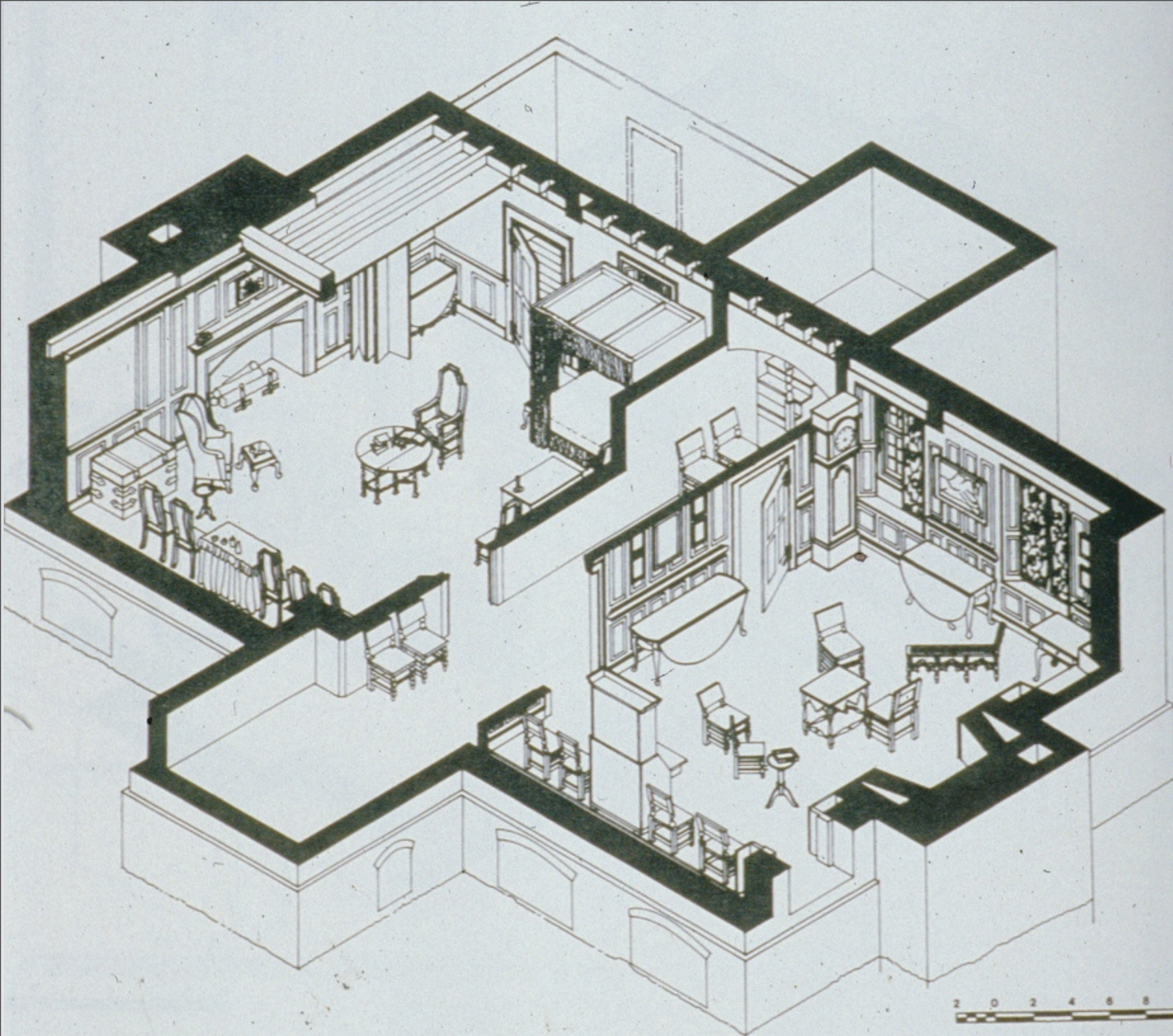
Artisan Mannerism and the Dutch Connection



DUTCH CROSS BOND

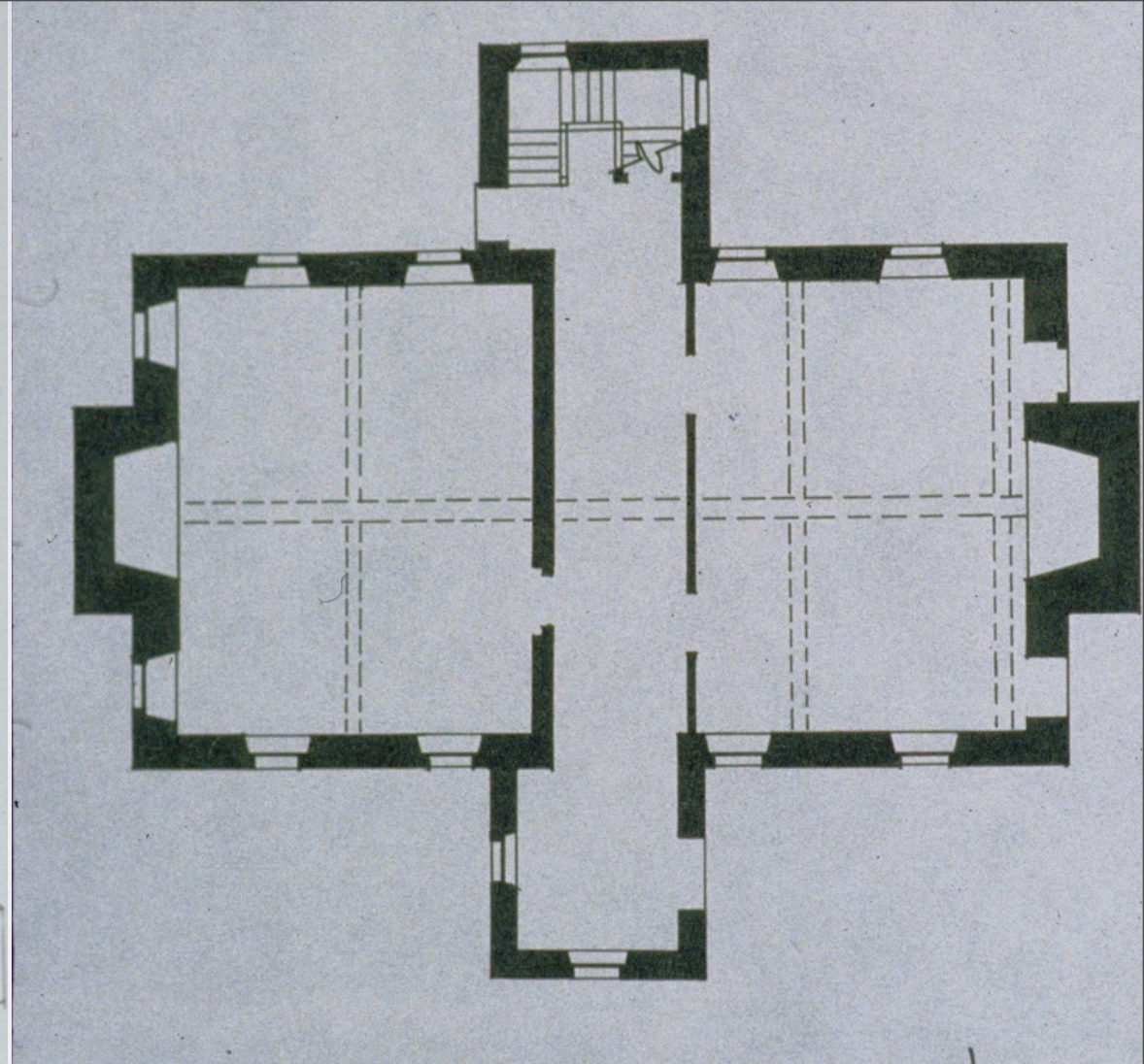
77. Dutch-cross-bond brickwork (Philip White)

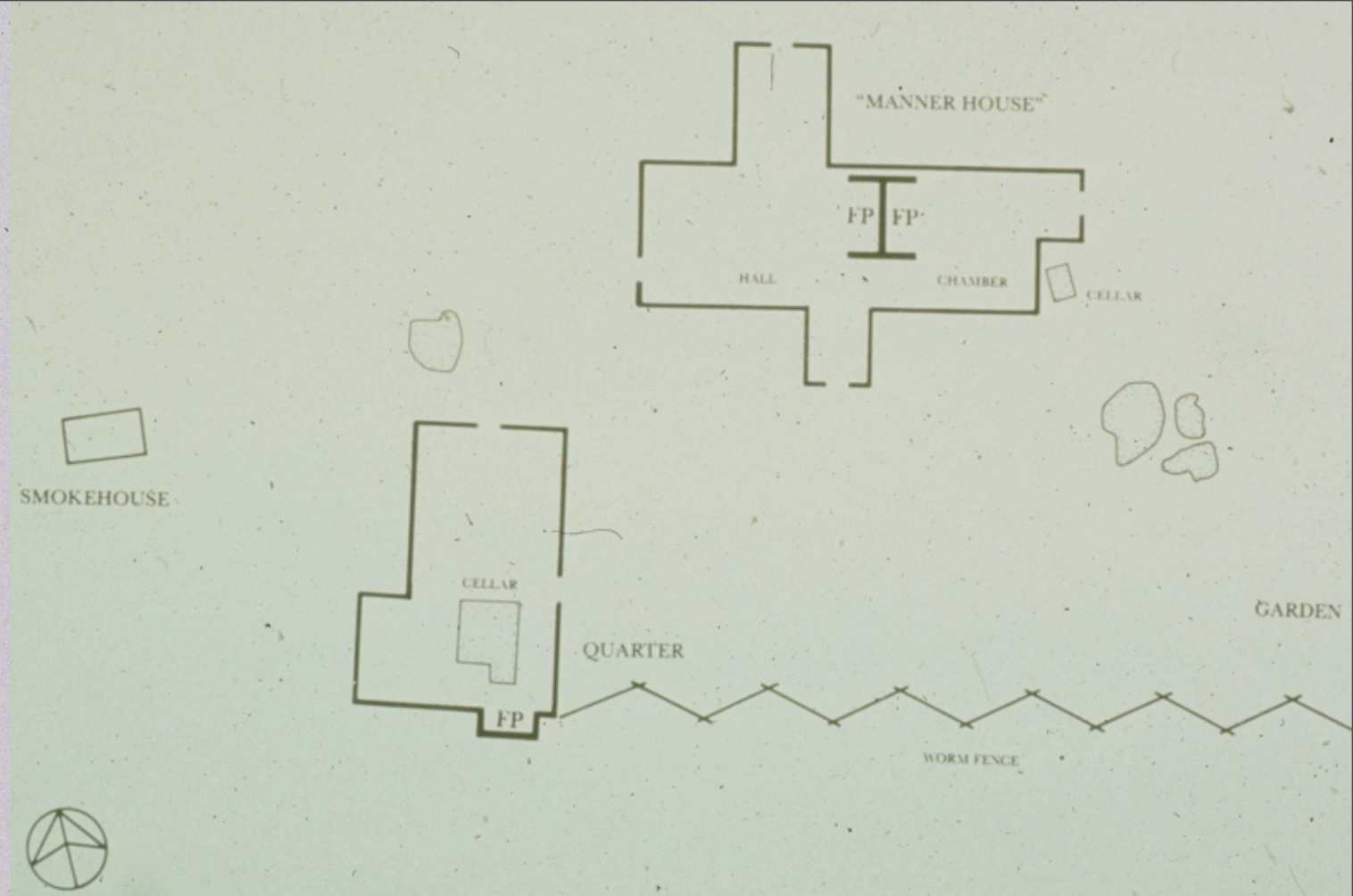
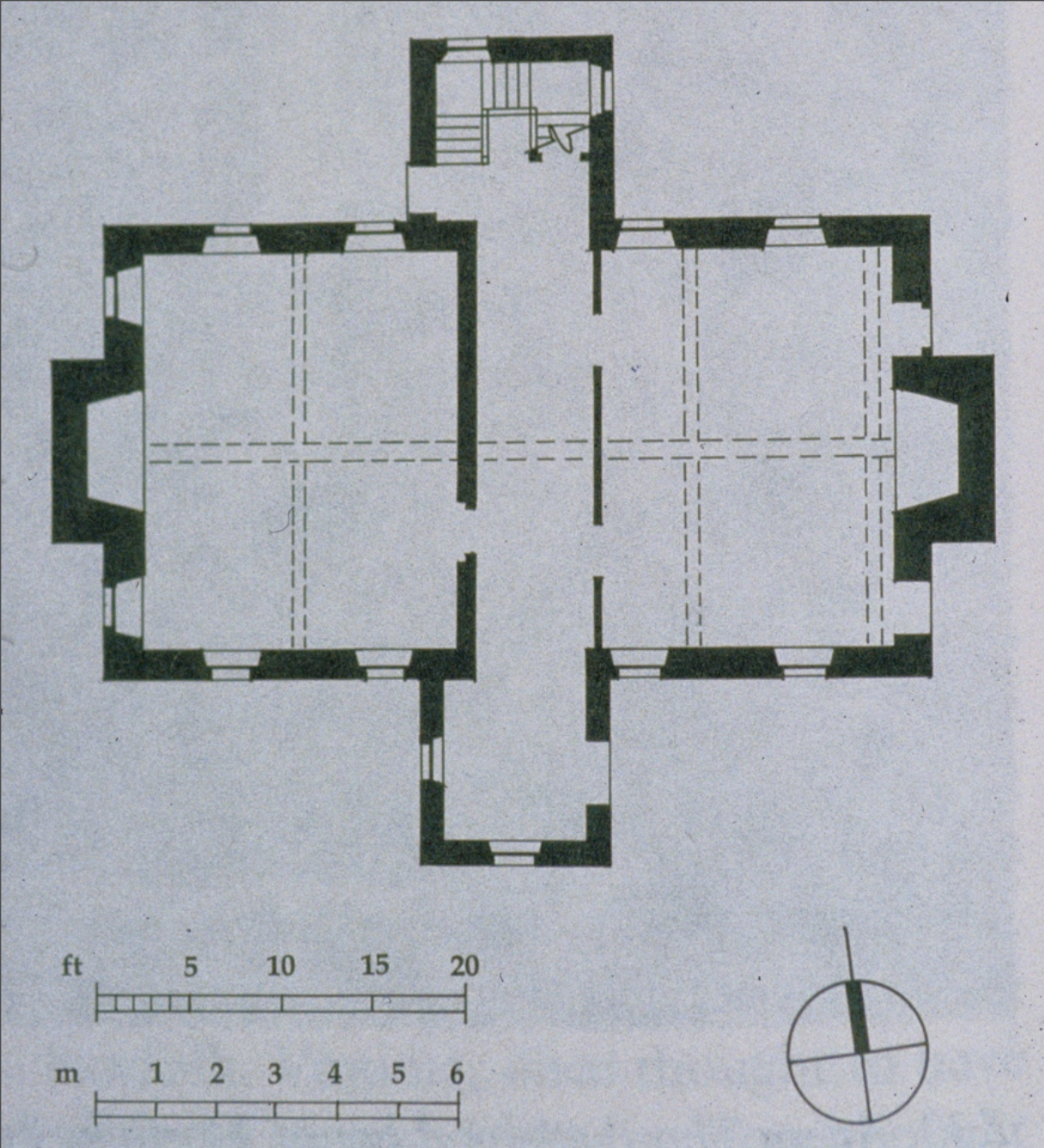




First Floor Furnished
1755

Note:
Lobby Entrance
Stair tower
Alterations and reasons





Compare the changes during the 1680s at Clifts Plantation to those at Bacon's Castle

Fairfield, 1692, Gloucester Co, Va.

**Transition from Artisan Mannerism
to Anglo Dutch Palladianism.**

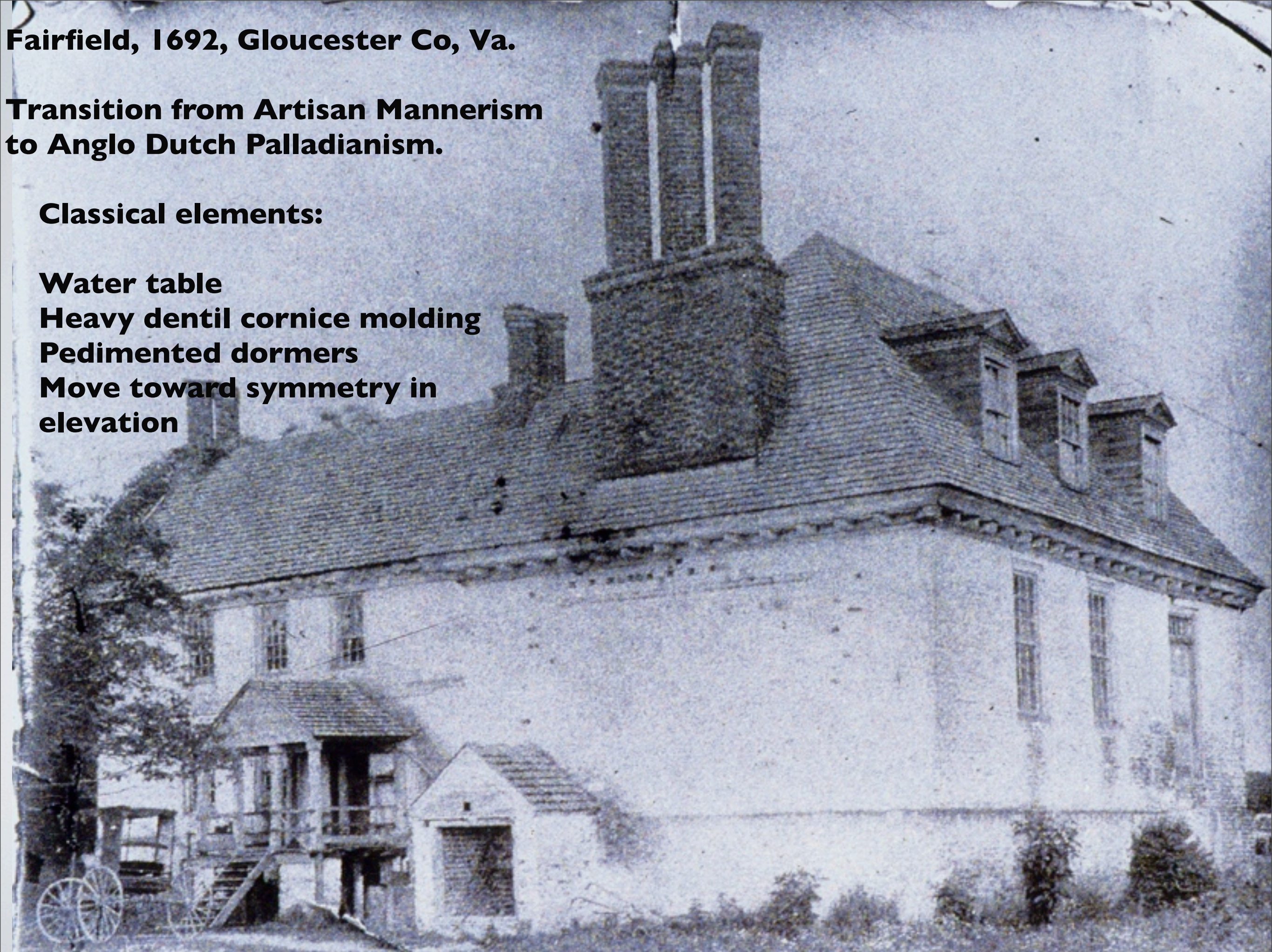
Classical elements:

Water table

Heavy dentil cornice molding

Pedimented dormers

**Move toward symmetry in
elevation**



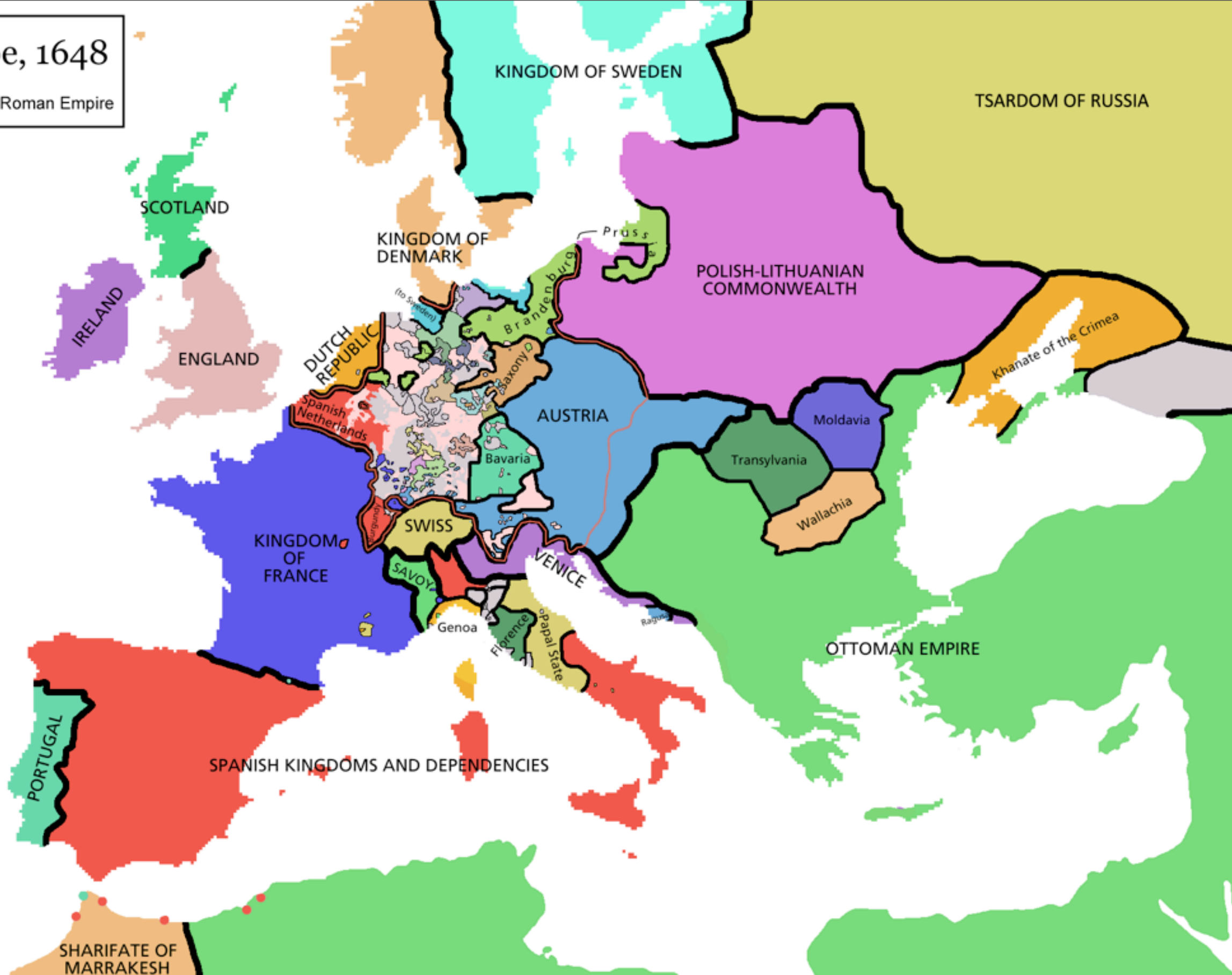
Anglo Dutch Palladianism: The Dutch Connection



Mauritshuis, 1633, The Hague, Netherlands
Anglo Dutch Palladianism

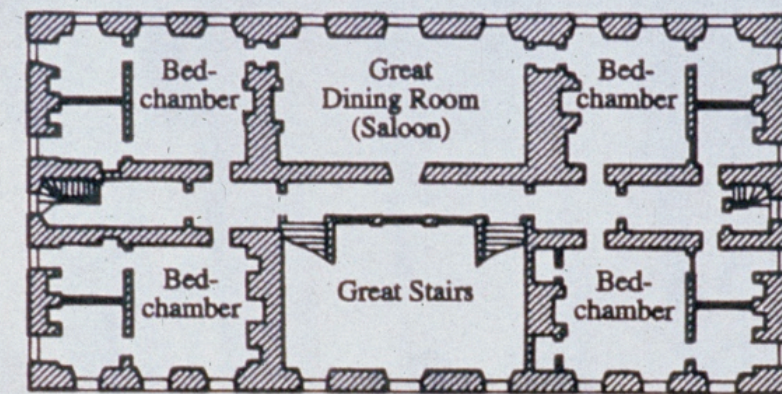
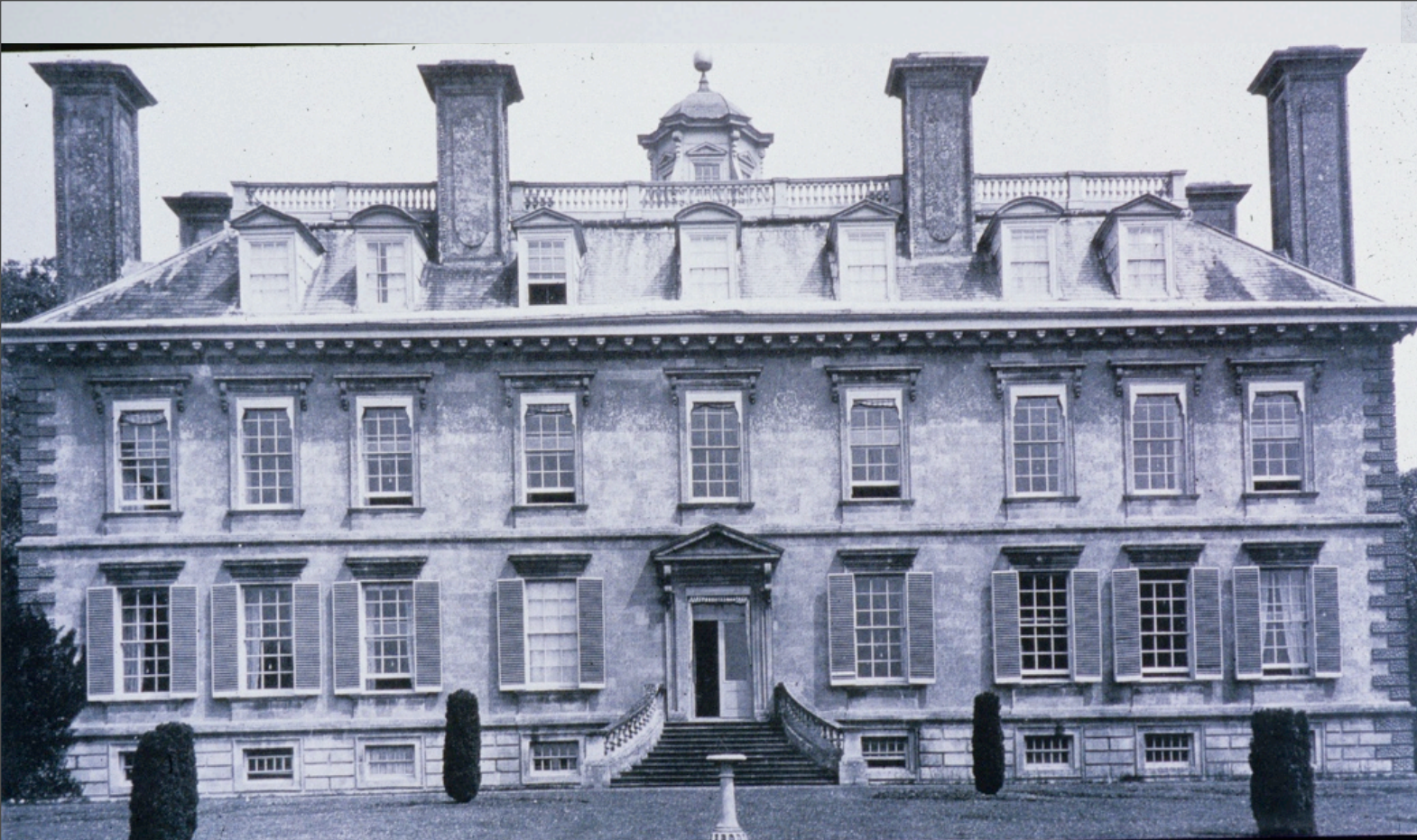
Europe, 1648

— Holy Roman Empire

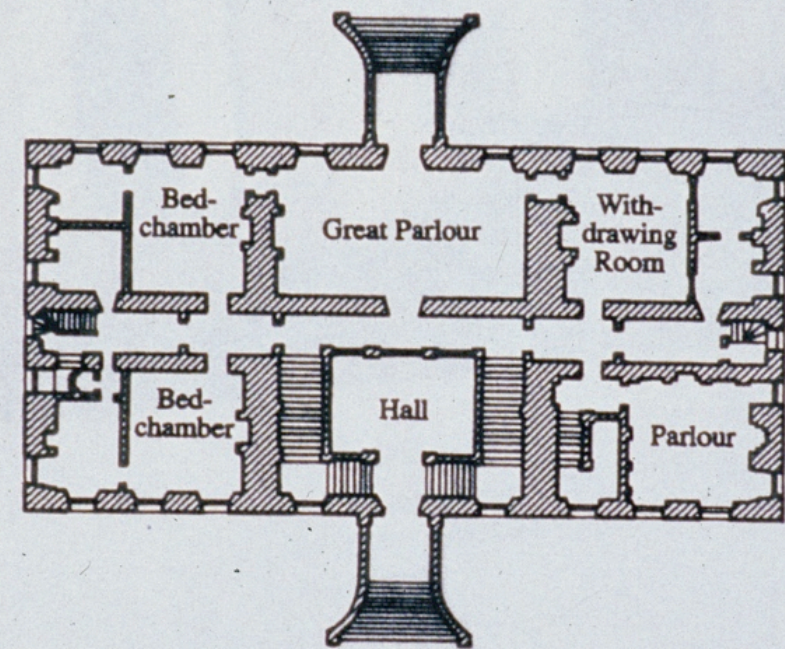




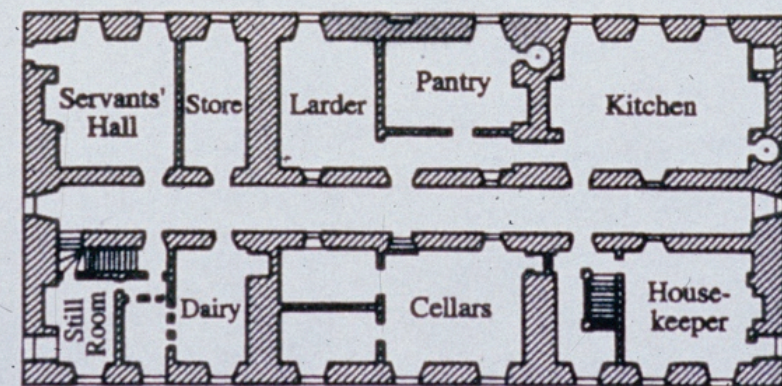
Wellford House, 1660, Sussex, England



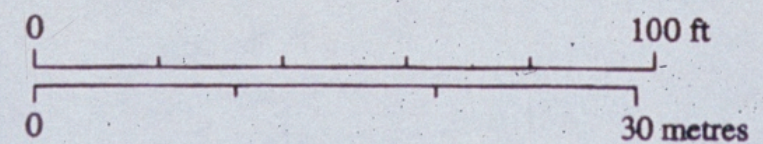
FIRST FLOOR



GROUND FLOOR



BASEMENT



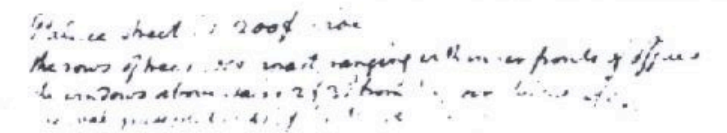
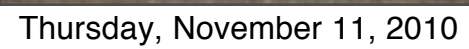
Coleshill, 1650, Berkshire, England

Note especially the plan

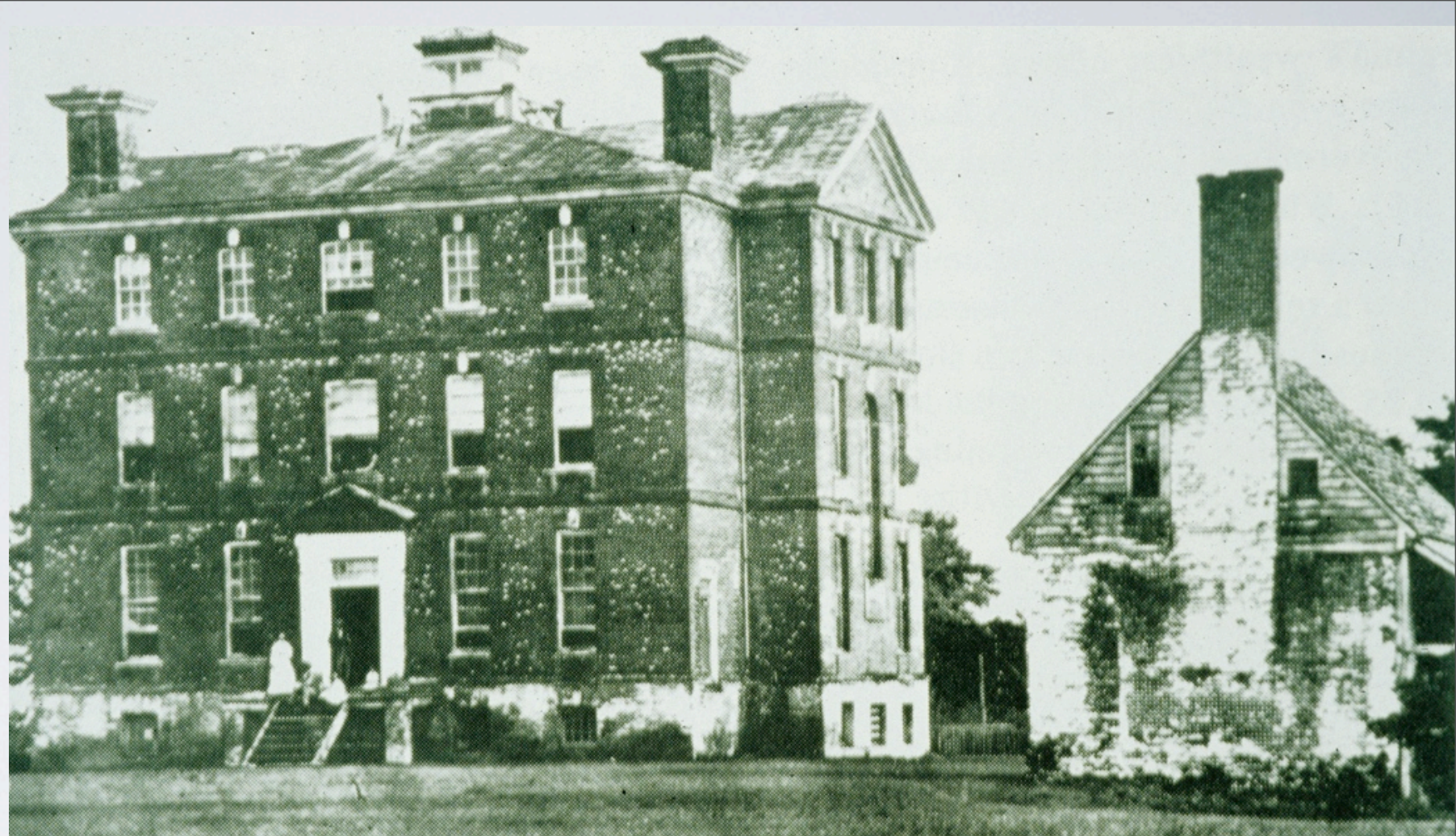


Governor's Palace, 1718, Williamsburg, Va





Rosewell, 1725
Gloucester Co, Va



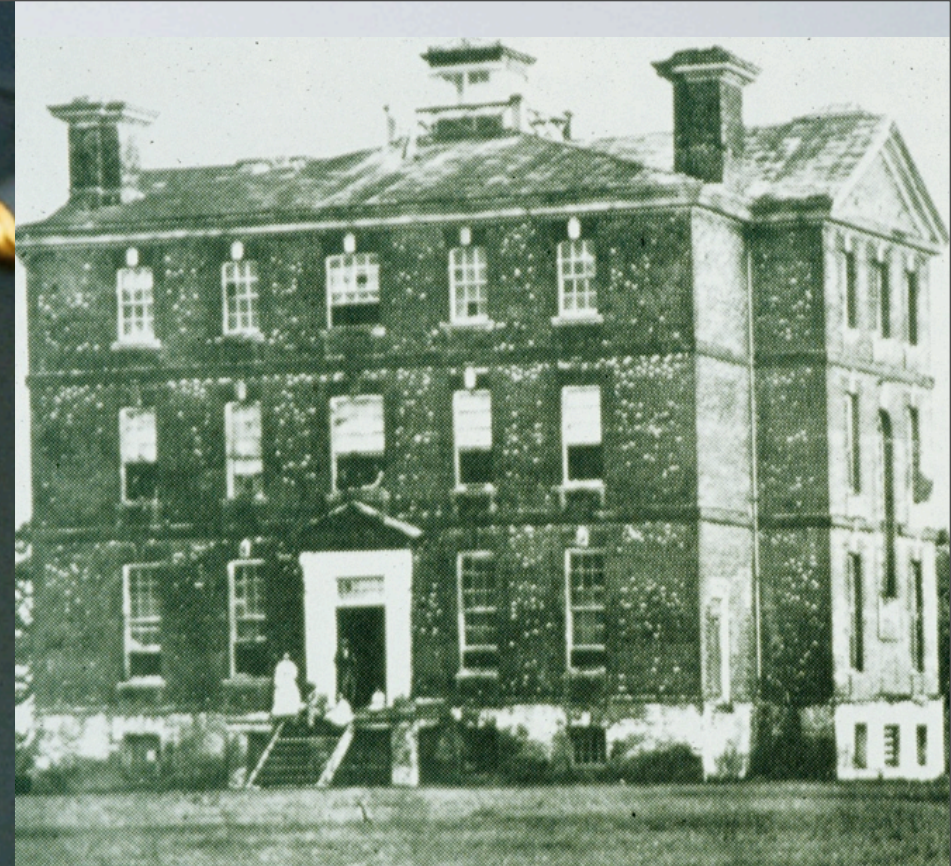
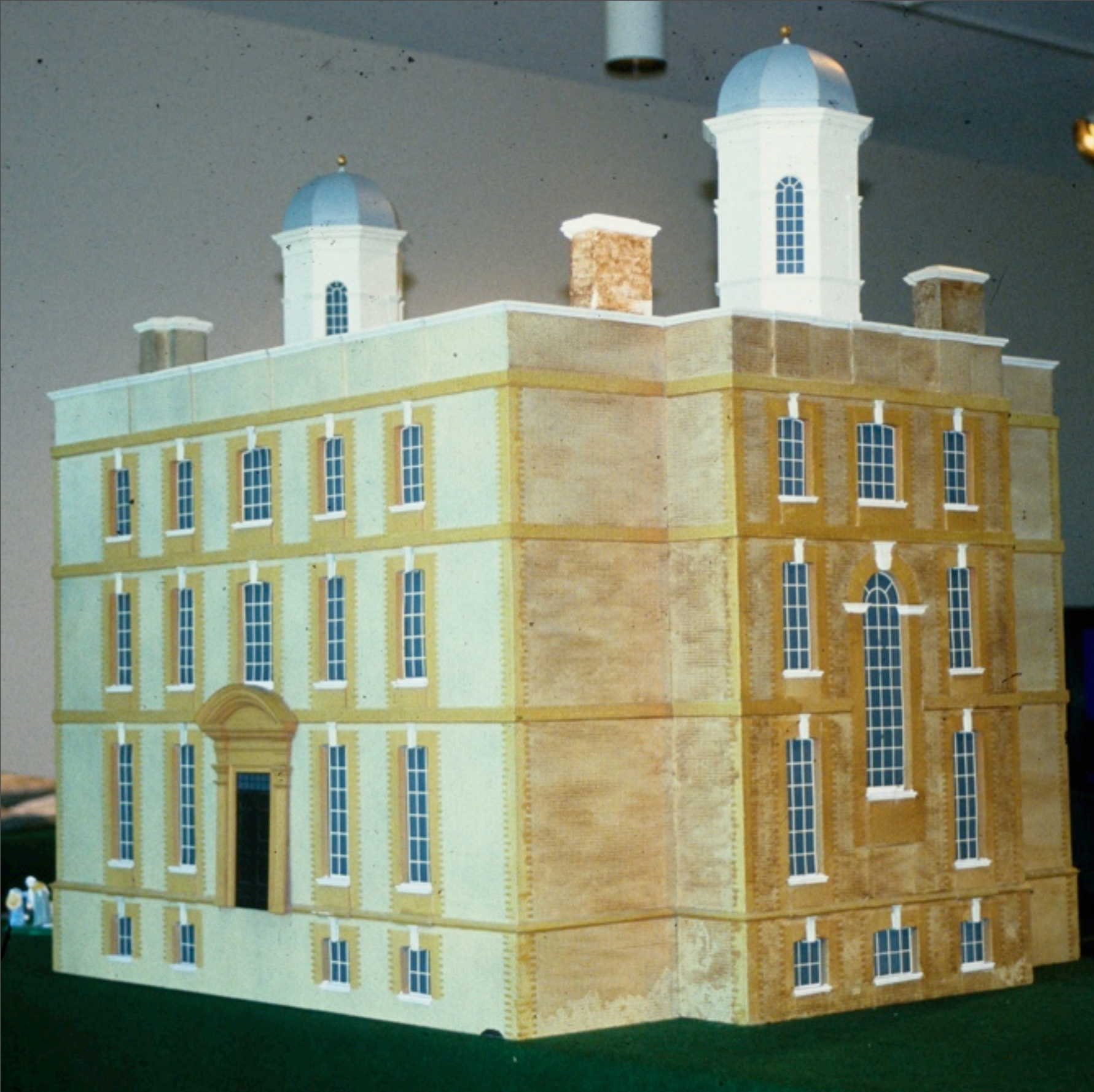
Anglo-Dutch Palladianism: The Shropshire Connection

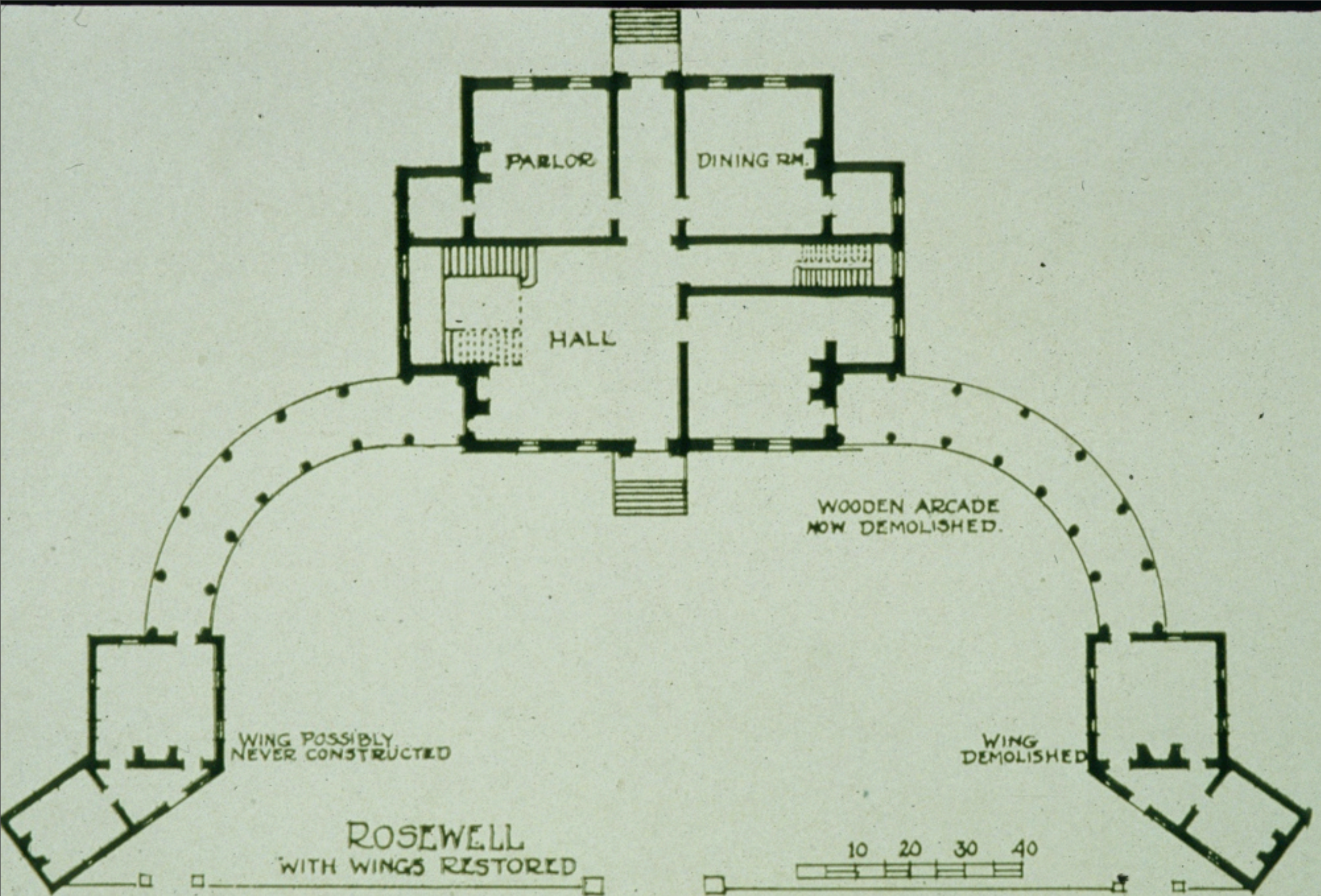


Cound Hall, 1704, Shropshire, England

**Possible “Shropshire School” according to
Waterman**







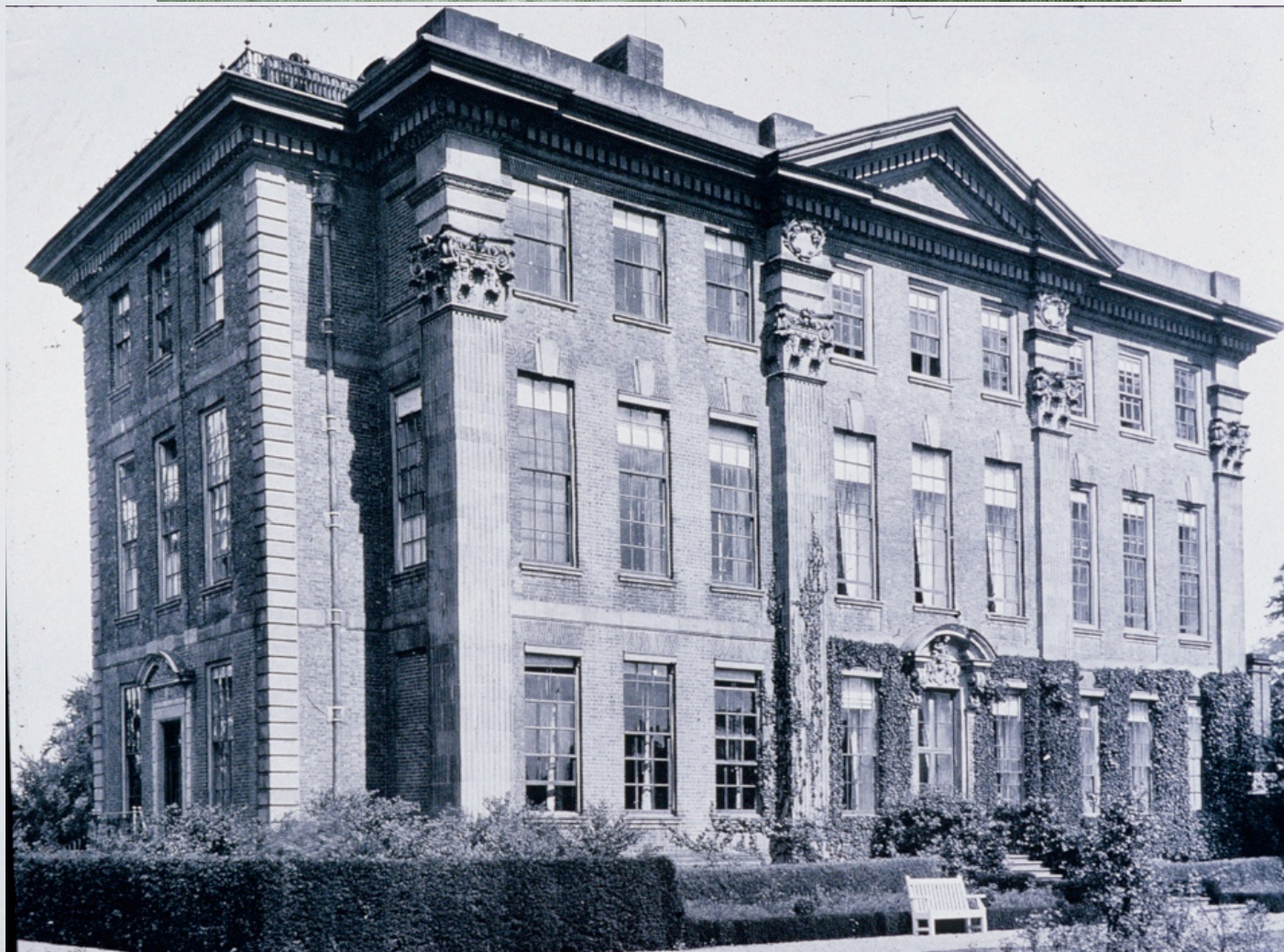
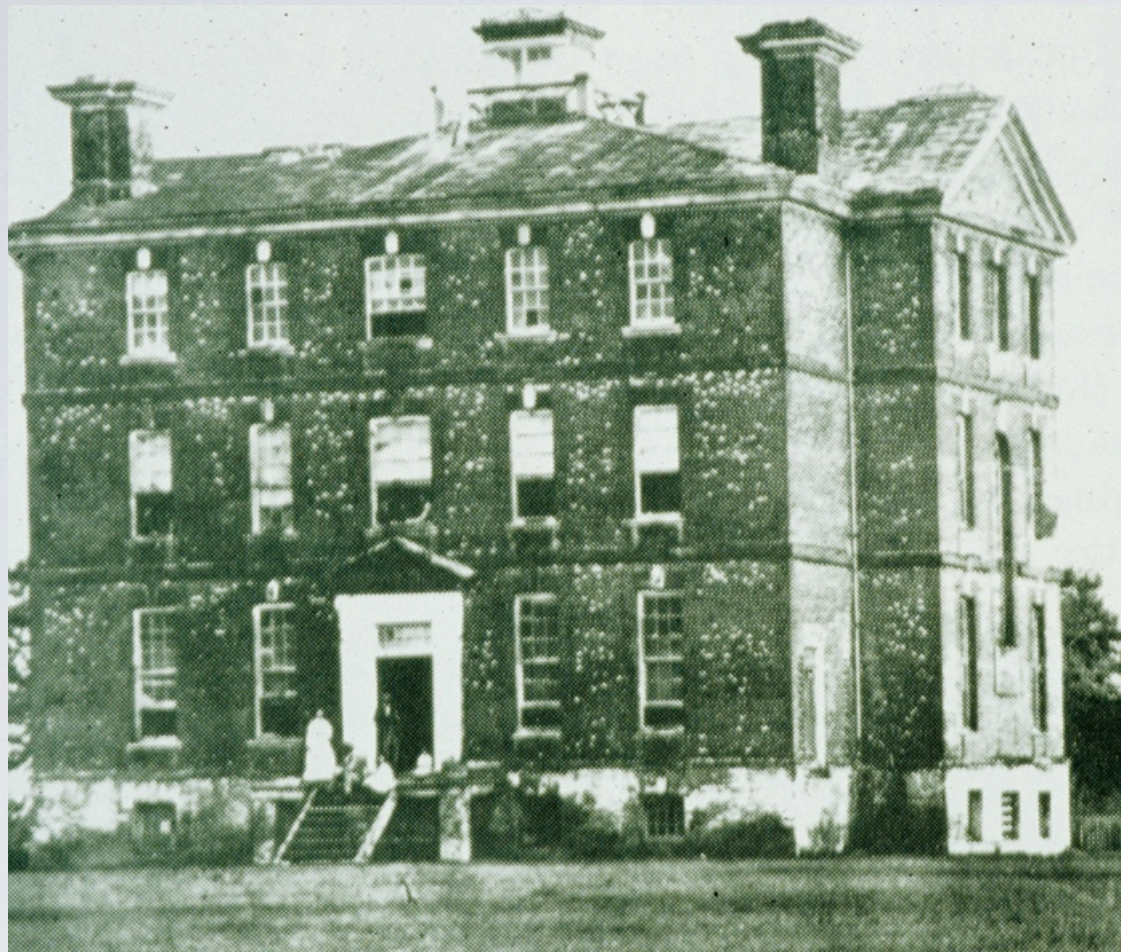
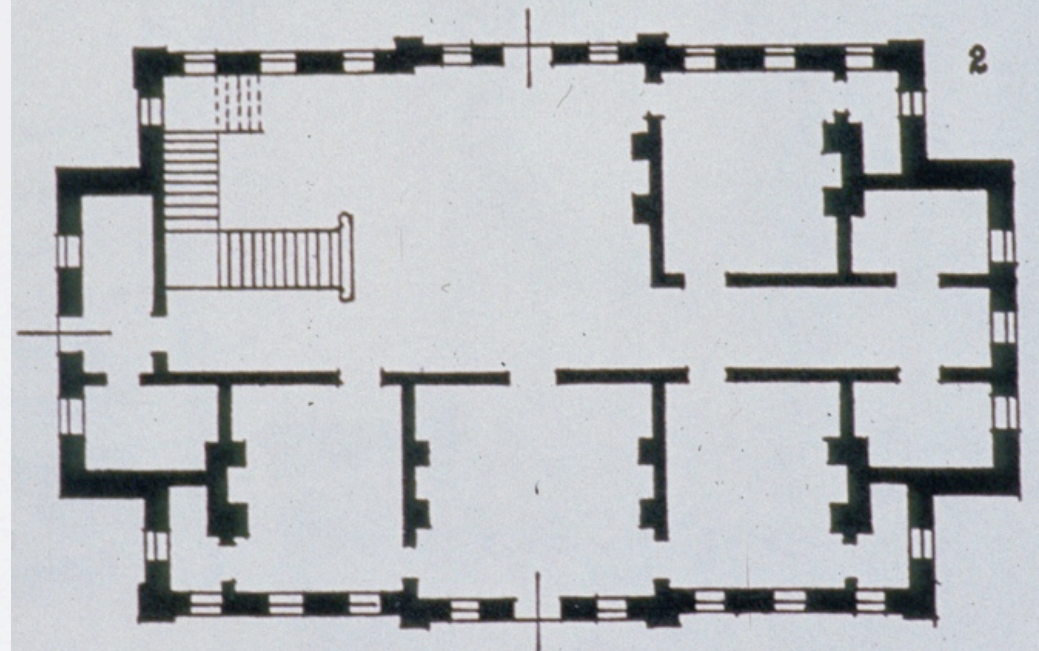
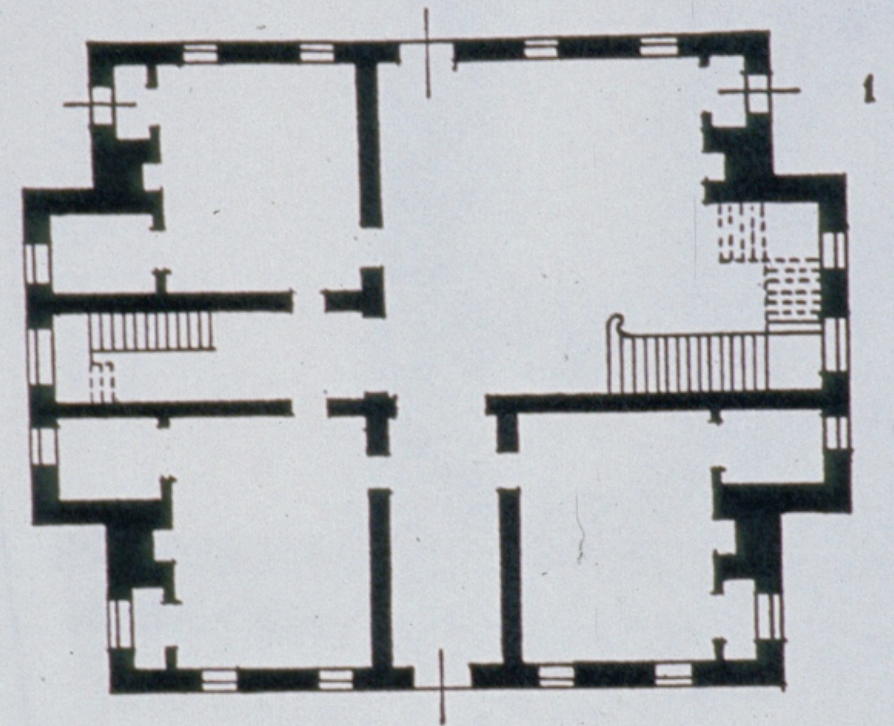
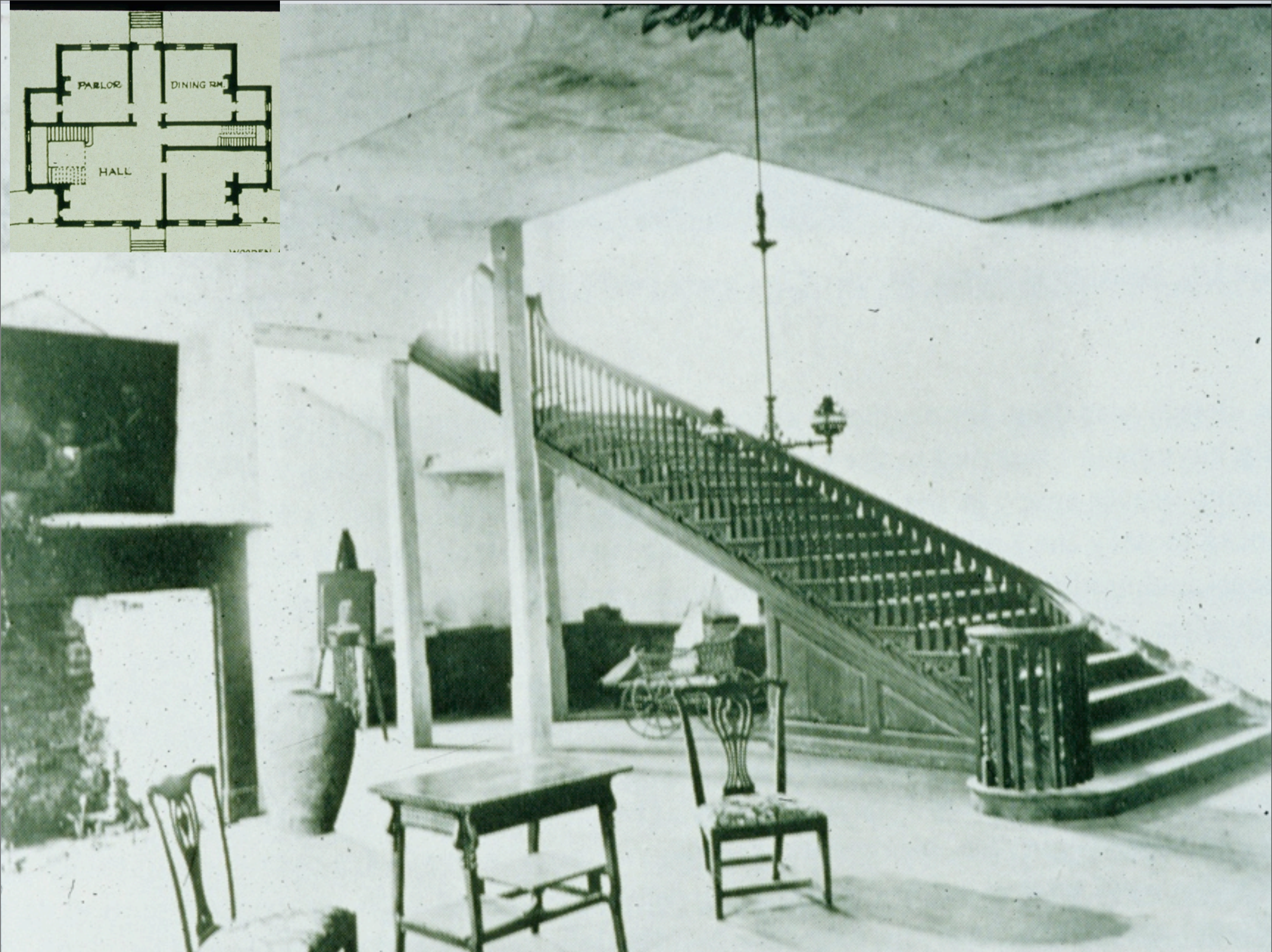
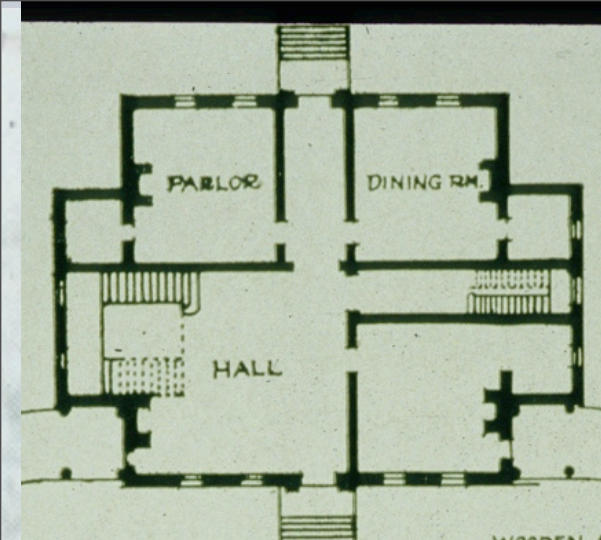


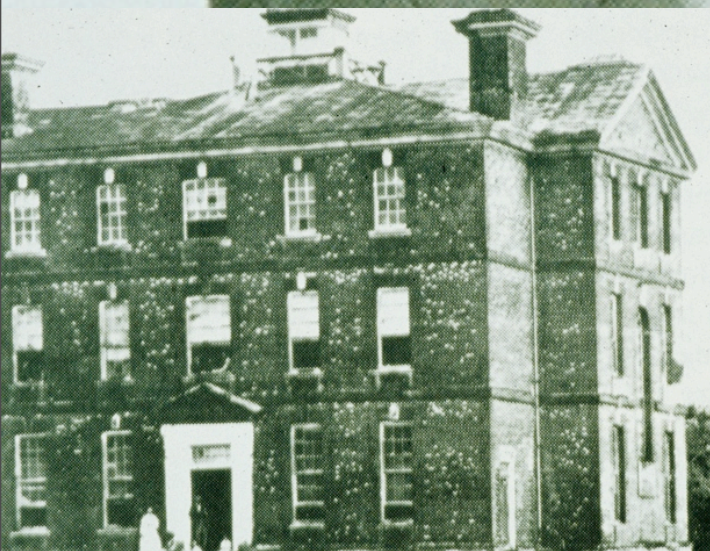
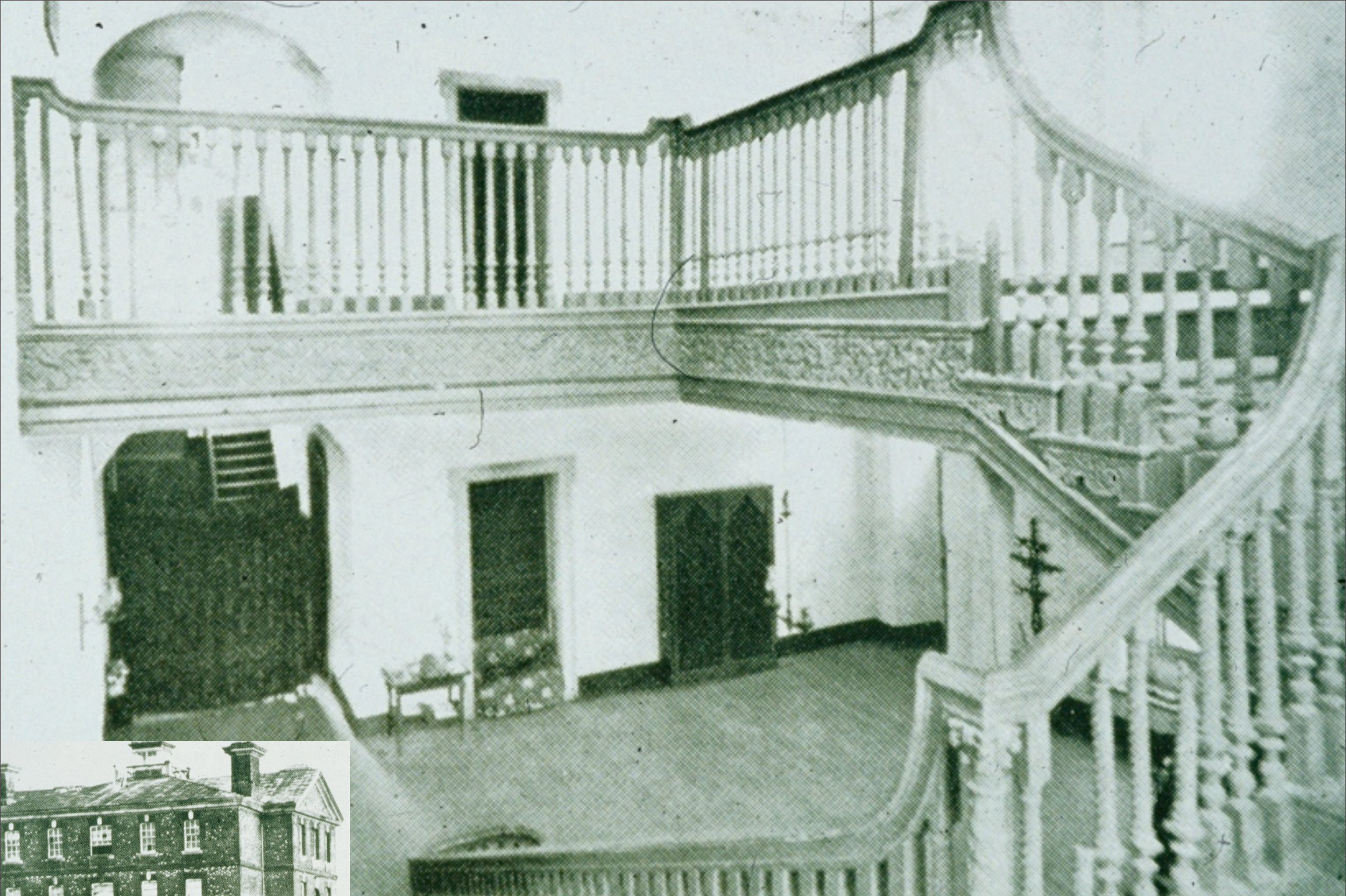
PLATE I



0 5' 10' 15' 20'

1. Rosewell (1720-30), Gloucester County, Virginia.
(Shown without dependencies.)
2. Count Hall (1703), Shropshire, England.
(Before the alterations.)

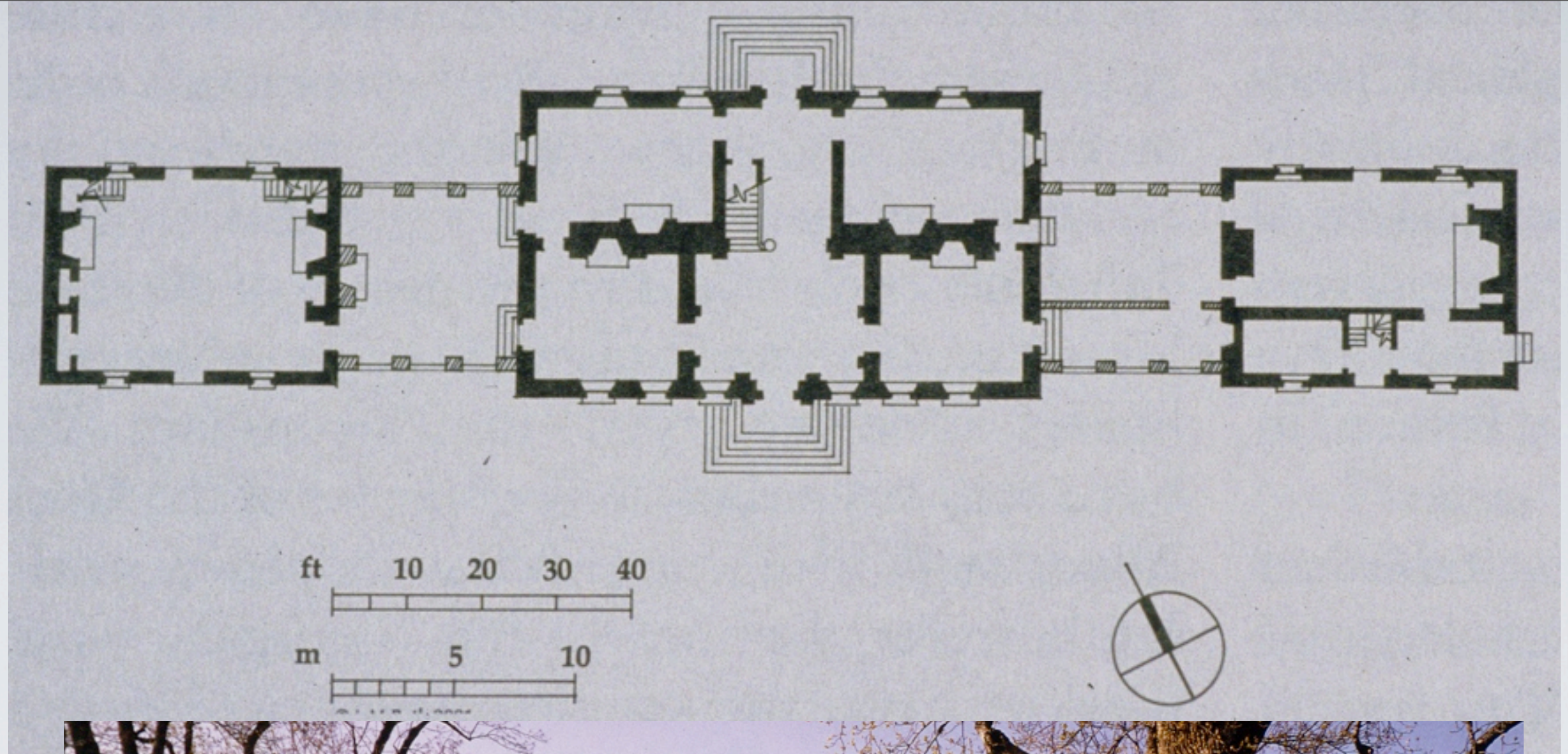






**Carter's Grove, 1750,
Williamsburg, Va**







Westover, 1750, Charles City, Va

Artisan Mannerism and Anglo-Dutch Palladianism

Both results of Mercantile Capitalism and Corporate Colonialism

